



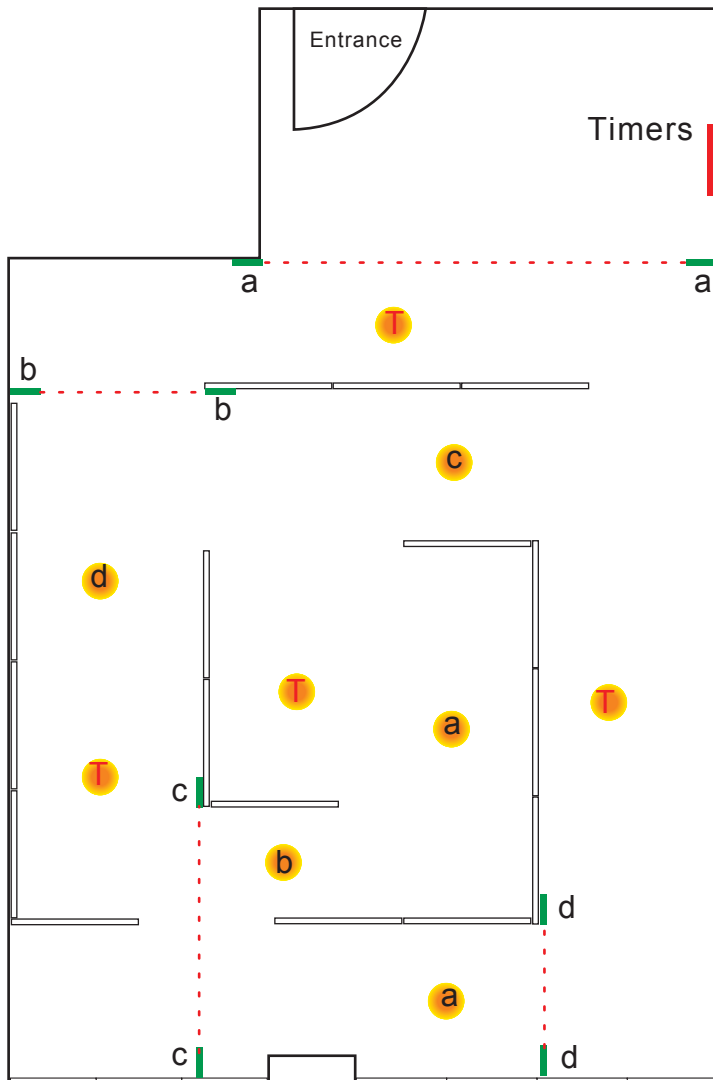
Shoji paper are sanded, there are vanish stains from place to place



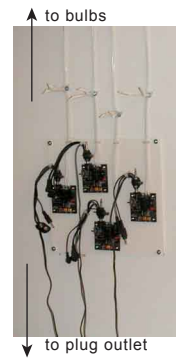
Shoji paper are fixed on both sides on flames, paper are ripped out at intervals on one side



Uncovered fixed-wires are followed by sight



— · — · — · — Infrared sensor a ~ d
 ● Electric bulb



Timers
 Each Timers are connected each bulbs, make it turn off 20 - 30sec. , turn on 5 - 8 sec.



Infrared sensors
 When visitors cut infrared by to pass between infrared sensors, a bulb conected with sensor is turned on and after 4 sec. it is turned off automatically

